

A scenic landscape featuring rolling hills and a large body of water under a cloudy sky. The hills are covered in dense forest, and the water is a calm, light blue-green color. The sky is filled with soft, white clouds, suggesting a bright but slightly overcast day. The overall mood is serene and natural.

IMPEX KAYAKS

- BY -

abitibi & co.

LIVE BEYOND THE BEND

EDITION

2015

IMPEX KAYAKS

It's surging through the water, feeling the spray hit your face as you paddle harder, your blades propelling you like a comet. It's the desire to launch forth yet again: for greater adventure, new memories, the rush of the here and now. It's the knowledge that anything could happen, that a world of wonder awaits. Above all, it's the desire to find a waterway more challenging, more exciting than the last. To return home jubilant, filled with awe and thanks, and with the unceasing urge to get back out and do it all over again.

Impex was born of love for the Canadian waterways and the drive to build the best kayaks to navigate them. Known worldwide for quality and durability, our Greenland style kayaks are the best of the best. Kayaking is our passion, so we build our boats to be as user-friendly as possible. Both the novice and experienced paddler will discover freedom and unrivalled confidence in our expertly crafted models.

Different paddlers need different kayaks. Though there are intricate differences among our various models, certain commonalities are what make Impex Kayaks the top choice. We build our kayaks to be strong and durable, but also to keep you dry and comfortable during your trips. The shallow v-hull design means that they're impressively stable, giving confidence to paddlers no matter how challenging the conditions. And let's not forget that they're lightweight, meaning more independence.

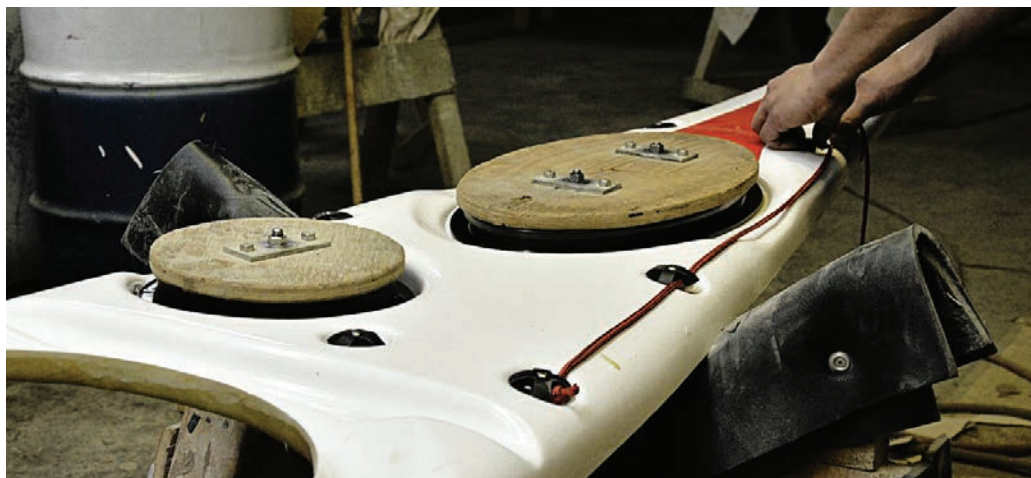
CONSTRUCTION

As it's our love for the wilderness that keeps us going, it only makes sense that we manufacture our products in a way that's environmentally sustainable. We construct our kayaks with the best quality local materials, not just supporting the Canadian economy, but also reducing our footprint on the environment by saving fuel due to transportation. We also use state of the art technology that enables us to create the thinnest, strongest, hardest kayaks possible, so you can spend more time seeking adventure and less time worrying about wear and tear.

We're a proudly Canadian company with a promise to do everything we can to save our pristine natural environment for future generations. So when you buy an Impex kayak from abitibi & co., know that it's not just quality you're investing in, but also the commitment to protect and restore our waterways, and help share this natural wonder with all people.

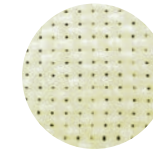
We believe in the future. And we want our kayakers to take us there. Using the highest quality materials and attention to detail in workmanship, we build kayaks that will last longer and take you on more adventures. Whether it's speed and freedom or durability and stability you're looking for, you'll find the perfect fit in our variety of layups.

Our kayaks are constructed from fiberglass and Kevlar, materials that are light and durable and have the track record to prove it. They're also easy to repair, so if you do have a run in with a rock, it won't be the end of the world (or your kayak). When we fabricate our kayaks, we consider the combination of weight, strength and cost. Lighter kayaks are easier to manoeuvre, having said that, increasing durability often means increasing the weight of the boat. All of these considerations are incorporated into our designs so that you can feel confident that when you choose an Impex kayak, it's the right one for you.



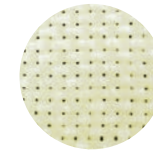
FIBERGLASS

After years of testing, we're confident that our fiberglass layup is both strong and light enough for easy solo handling. Though they're slightly heavier than our Kevlar laminate, they are extremely durable, and the most economical choice.



STANDARD KEVLAR

If weight's an issue, then Kevlar is definitely the way to go. This is our most popular laminate, and for good reason. Both durable and lightweight, it's a fantastic choice for gung-ho and laid-back paddlers alike.



EXPEDITION KEVLAR

The sturdiest of our laminates, these kayaks are durable in harsh conditions and with continual use. They can take a beating and yet survive soundly – ideal for extended white water use. Built from similar materials to the Standard Kevlar kayaks but with extra layers added, Expedition Kevlar is popular among wilderness trippers and those who need extreme durability in a lightweight kayak.

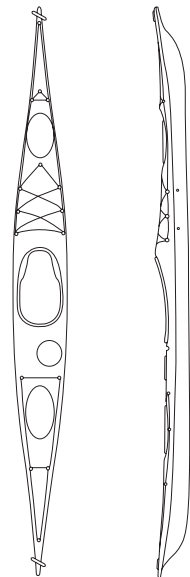
NEW FEATURE: KEEL STRIP

We are always looking for ways to increase the durability and the quality of our kayaks. This is why we've added a keel strip on the haul of every kayak.



THE FORCE

The waves roll in. Salty spray covers your face as you lean into the wave and then surge ahead with power. The Force series offers the most cutting edge, fastest expedition Greenland style kayaks in our range. By increasing water line, with more length and less rocker, the Force will track straighter and paddle faster, making the last miles of even the longest day a pleasure. Working for precision manoeuvrability, we decreased the width and slightly increased the hardness of the medium chines. Although flatter kayaks are harder to turn, these hull advancements in the hands of a skilled paddler make the Force dance on water.

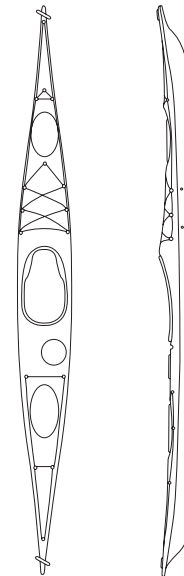


CATEGORY 3

Speed across the surf, roll with the waves and push yourself in ways you never thought you could. The Force Category 3 is kayak tailored for small to medium framed paddlers. You'll have maximum control in this expedition kayak and soon be outperforming even your personal best.

OVERALL

LENGHT	17"	BOW	3290 CU. IN.
WIDTH	20.5"	STERN	4465 CU. IN.
MIDSHIP	10.5"	DAY HATCH	2115 CU. IN.
COCKPIT	17"X33"		
WEIGHT	55 LB		
PADDLER WEIGHT	110-180 LB		
VOLUME	85 US GAL.		

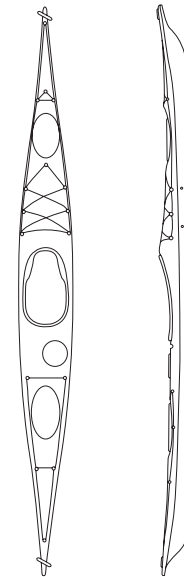


CATEGORY 4

Finding the perfect fit in a kayak will let you push past your imagined limits. The Force Category 4 gives medium to larger paddlers the opportunity to find their comfort level and destroy it, whether in salt or fresh water, flat or heavy conditions.

OVERALL

LENGHT	18"	BOW	3525 CU. IN.
WIDTH	20.75"	STERN	5170 CU. IN.
MIDSHIP	12.5"	DAY HATCH	2350 CU. IN.
COCKPIT	17"X33"		
WEIGHT	58 LB		
PADDLER WEIGHT	150-220 LB		
VOLUME	90 US GAL.		



CATEGORY 5

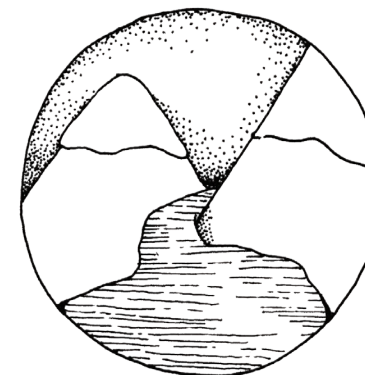
Race through the waves in a kayak that fits like a glove. The Force Category 5 is the perfect choice for larger expedition paddlers who want to push themselves and their kayaks to the limit. The great fit of this kayak will encourage you to spend more time on the water and simply give it your all.

OVERALL

LENGHT	18"	BOW	3525 CU. IN.
WIDTH	20.75"	STERN	5170 CU. IN.
MIDSHIP	13"	DAY HATCH	2350 CU. IN.
COCKPIT	17"X33"		
WEIGHT	60 LB		
PADDLER WEIGHT	150-220 LB		
VOLUME	90 US GAL.		

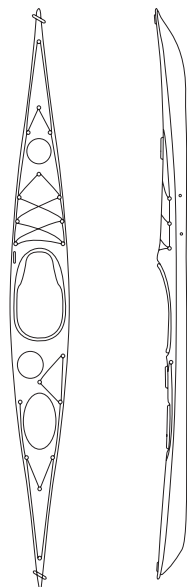
SPECIALTY TOURING

Play in the waves and wind across the rocky shore.
 Pack up for a weeklong trip exploring islands and coves.
 Our specialty touring kayaks were designed for experienced paddlers and novices alike. With great manoeuvrability and fantastic speed, these kayaks will make you never want to leave the water.



8

9

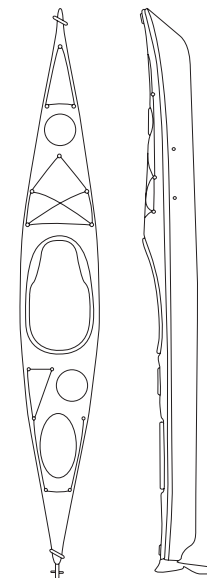


OUTER ISLAND

The pleasure of shooting across the water, tumbling with waves, feeling united with the elements. Designed by paddler/designer, Jay Babina, this Western Greenland Style kayak has performance, rolling ability, low windage and speed as the top criteria. With very little hull rocker, it has loads of speed for touring, but with a low rear deck and soft chines, it also allows for control and success when perfecting the most challenging Greenland rolls and braces. Whether it's elegance, fast touring or a rolling machine you're looking for, this kayak is simply a dream.

OVERALL

LENGHT	18"	BOW	2500 CU. IN.
WIDTH	21.5"	STERN	2900 CU. IN.
MIDSHIP	10.5"	DAY HATCH	1580 CU. IN.
COCKPIT	16"X30"		
WEIGHT	55 LB		
PADDLER WEIGHT	145-220 LB		
VOLUME	58 US GAL.		



HESPER

A serene paddle along the canal at the end of the day, watching ducks fight over the crumbs thrown by excited youngsters. A weekend birding tour, pausing to grab your binoculars and follow an osprey as it darts across the sky. We get it: not everyone can paddle the wilderness on epic expeditions. If it's versatility you're looking for, the Hesper is a great choice. Perfect for the beginner who wants to grow their skills, or the recreational paddler who wants to fish and take photos, the Hesper is stable and comfortable with plenty of space for storage.

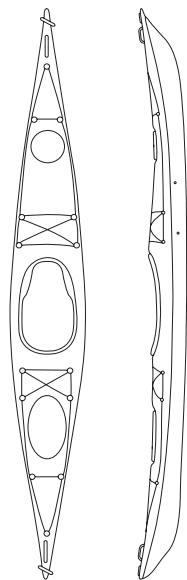
OVERALL

LENGHT	14"	BOW	5900 CU. IN.
WIDTH	24"	STERN	6850 CU. IN.
MIDSHIP	14.25"	DAY HATCH	2520 CU. IN.
COCKPIT	16"X30"		
WEIGHT	47 LB		
PADDLER WEIGHT	90-280 LB		
VOLUME	92 US GAL.		

PERFORMANCE TOURING

Sail across the glassy early morning lake, sending geese flying as you weave around tiny islands and tall grasses. Our performance touring line offers paddlers the confidence of control and stability while taking their paddling to the outmost limits. Designed in four sizes to accommodate every sized paddler, we've paid attention to every detail so you can paddle in comfort and style.

10

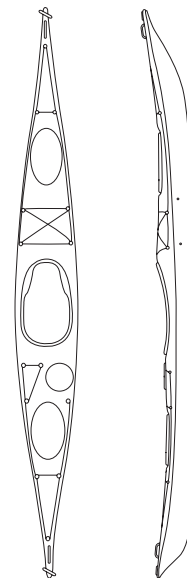


MYSTIC

Skirt around a quiet cove, rolling in the surf, rising and falling with the push and pull of the sea. Glide effortlessly across the lake, watching your cottage get smaller as you near the islands begging for explorations. If you love day paddling and the occasional overnight camping trip, then the Mystic is made for you. It was designed for smaller paddlers who want big sea kayak performance, but also need the storage capacity found in a kayak designed for touring. It's at home both on open water and in secluded bays, and will carve through the swell with minimal resistance, letting you save a little energy for campsite shenanigans.

OVERALL

LENGHT	14"	BOW	2115 CU. IN.
WIDTH	21.5"	STERN	3760 CU. IN.
MIDSHIP	11"	DAY HATCH	N/A
COCKPIT	16"X30"		
WEIGHT	46 LB		
PADDLER WEIGHT	90-180 LB		
VOLUME	55 US GAL.		



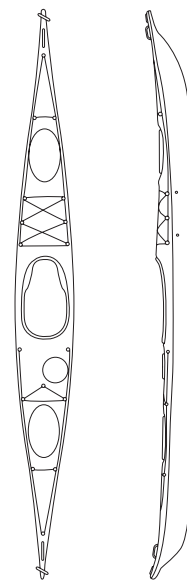
MONTAUK

Discover bays and coves you never knew existed. Paddle until your arms ache, the wind sifting through the trees, the ocean lapping at the rocks, mimicking your heart beat. The Montauk is a sleek, seaworthy and stable kayak for small to medium sized paddlers. The moderately chined hull makes for great tracking and a high level of initial stability, while letting you lean the kayak when turning or carving down the face of a wave. The modified Greenland style bow and stern will make sure that you stay dry in the harshest conditions while minimizing the effects of a beam wind and sea.

OVERALL

LENGHT	16"	BOW	2585 CU. IN.
WIDTH	22"	STERN	3290 CU. IN.
MIDSHIP	12.5"	DAY HATCH	1645 CU. IN.
COCKPIT	16"X30"		
WEIGHT	50 LB		
PADDLER WEIGHT	120-190 LB		
VOLUME	60 US GAL.		

11

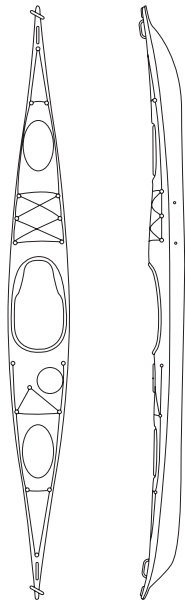


CURRITUCK

Skate through wave washed caves, every corner a new discovery. Glide across a mountain lake, the water mirroring the billowing clouds of the never-ending sky. The Currituck combines greater initial stability with an easy to carve width, making it the easiest paddling Greenland kayak around. The 17' hull is great for long crossings, but also manoeuvrable enough to handle big waves. The rocker is enough to turn with a paddle stroke on a lazy paddle, but get this kayak on the edge and it has the manoeuvrability to explore the tightest spots or race confidently down the crashing surf.

OVERALL

LENGHT	17"	BOW	3290 CU. IN.
WIDTH	21.5"	STERN	4465 CU. IN.
MIDSHIP	13"	DAY HATCH	2115 CU. IN.
COCKPIT	16"X30"		
WEIGHT	56 LB		
PADDLER WEIGHT	150-220 LB		
VOLUME	80 US GAL.		



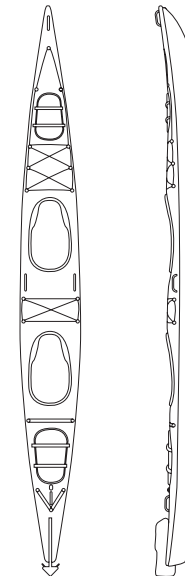
ASSATEAGUE

A quick early morning paddle that makes it hard to believe you're in the city. You brush by aquatic plants, eyes on the gently lapping water, finally bringing them up to rest on the impressive skyline, knowing that your day is starting off the best way it can. Comfortable enough to spend hours in their kayaks, the Assateague has become the top choice of larger paddlers in North America. The key is our wider cockpit opening and comfortable yet simple outfitting. By increasing the size of the cockpit at the midship, we allow for easy entry and exit while keeping a tight fit for control. With over 10,000 cubic inches of space, this boat is simply begging to be loaded for an epic adventure.

OVERALL

LENGHT	17'10"	BOW	3525 CU. IN.
WIDTH	22.5"	STERN	5170 CU. IN.
MIDSHIP	13.75"	DAY HATCH	2350 CU. IN.
COCKPIT	17"X32"		
WEIGHT	59 LB		
PADDLER WEIGHT	150-250 LB		
VOLUME	95 US GAL.		

12



TEMISKAWA

You fly through the water, your strokes in unison. You sail past gnarled trees, rocky coves, an unimaginable variety of birds. Sometimes two is better than one. If you want to share your paddling experience, or perhaps introduce a new paddler to the sport, the Temiskawa is a fantastic option. This short, narrow, and definitely lightweight tandem kayak weighs in at only 86 pounds, making it much lighter and more portable than your average tandem. If tripping is what you're after there are more than 9000 cubic inches of storage capacity. It has an efficient water line that moves along well and it keeps its hull speed even with paddlers of different strengths. As in most doubles, the length and width make difficult to turn, therefore the Temiskawa comes standard with a foot-controlled rudder system for easier manoeuvring.

OVERALL

LENGHT	19'8"	BOW	3760 CU. IN.
WIDTH	25.5"	STERN	5405 CU. IN.
MIDSHIP	15"	DAY HATCH	N/A
COCKPIT	17"X32"		
WEIGHT	86 LB		
PADDLER WEIGHT	90-260 LB		
VOLUME	179 US GAL.		

13

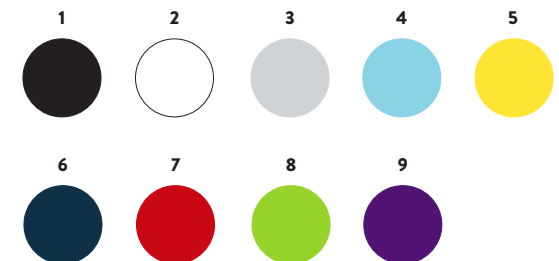


	LENGTH	WIDTH	MIDSHIP	COCKPIT	WEIGHT (FIBERGLASS)	PADDLER WEIGHT	VOLUME	BOW	STERN	DAY HATCH
(LBS)										
FORCE										
CATEGORY 3	17"	20.5"	10.5"	17"x33"	55 lb	110-180	85 US Gal.	3290 Cu. In.	4465 Cu. In.	2115 Cu. In.
CATEGORY 4	18"	20.75"	12.5"	17"x33"	58 lb	150-220	90 US Gal.	3525 Cu. In.	5170 Cu. In.	2350 Cu. In.
CATEGORY 5	18"	20.75"	13"	17"x33"	60 lb	150-220	90 US Gal.	3525 Cu. In.	5170 Cu. In.	2350 Cu. In.
SPECIALITY TOURING										
OUTER ISLAND	18"	21.5"	10.5"	16"x30"	55 lb	145-220	58 US Gal.	2500 Cu. In.	2900 Cu. In.	1580 Cu. In.
HESPER	14"	24"	14.25"	16"x30"	47 lb	90-280	92 US Gal.	5900 Cu. In.	6850 Cu. In.	2520 Cu. In.
PERFORMANCE TOURING										
MYSTIC	14"	21.5"	11"	16"x30"	46 lb	90-180	55 US Gal.	2115 Cu. In.	3760 Cu. In.	N/A
MONTAUK	16"	22"	12.5"	16"x30"	50 lb	120-190	60 US Gal.	2585 Cu. In.	3290 Cu. In.	1645 Cu. In.
CURRITUCK	17"	21.5"	13"	16"x30"	57 lb	150-220	80 US Gal.	3290 Cu. In.	4465 Cu. In.	2115 Cu. In.
ASSATEAGUE	17'10"	22.5"	13.75"	17"x32"	59 lb	150-250	95 US Gal.	3525 Cu. In.	5170 Cu. In.	2350 Cu. In.
TEMISKAWA	19'8"	25.5"	15"	17"x32"	86 lb	90-260	179 US Gal.	3760 Cu. In.	5405 Cu. In.	N/A

WEIGHT INFORMATION

All published weights are based on an average weight, which is calculated by weighing many completed kayaks of the same model. Published weights and specifications may vary. abitibi & co. reserves the right to alter the specifications and construction in a continuing product improvement policy.

Colours





CONTACT US
FOR MORE INFORMATION

INFO@ABITIBICO.CA
WWW.ABITIBICO.CA



abitibi & co.

LIVE BEYOND THE BEND